

SC15TW2

tank cleaning machine integrated turbine

Product Summary:

The SC15TW2 is a 1.50" dual nozzle automated tank cleaning machine constructed of 316L stainless steel and other highly corrosion resistant materials. The SC15TW2 has a fixed to moving gear ratio of 47 to 49 allowing it to produce a homogenous 360° pattern that is superior to that of any other rotating jet head in it's class. The SC15TW2 is classed as a rotating jet-head with an integrated turbine drive and employs an adjustable turbine and flow through gearbox. The adjustable turbine allows the rotation speed of the SC15TW2 to be adjusted without the need of changing costly stators and/or gearing found in other similar cleaning devices in its class.

Quality Control, Compliances & Certifications

The SC15TW is produced in accordance with ISO 9001 Quality Standards and our certificate of conformity and accreditation is available on request. Additionally, the SC15TW2 conforms to United States ASME standards for construction and is type approved by DNV, ABS, and Lloyds.

Typical applications for the SC15TW2 are...

- Road and Rail tanker cleaning
- Portable cleaning for contractors
- Fermentations tanks and process vessels
- Ship cargo tanks
- Barge tank cleaning
- Offshore drilling; mud pit tank cleaning and other drilling fluid tanks
- Wine storage tanks and fermenters
- Brewery storage tanks and fermenters
- ...more

General Specifications...

Class	Rotating Jet-Head
Drive	Integrated turbine
Programmable	No (Adjustable Turbine)
Gear Ratio	47/49
Spray Pattern	360°
Pressure Range	0-300 PSIG (0-20.69 Bar)
Flow Range	0-178 USGPM (0-40.42 m³/hr)
Temperature Range - Static	35°F to 252°F (1.67°C to 122°C)
Maximum Jet-Length @ 200 PSIG (13.79 Bar) Static	55 feet radius (16.76 meters)
Weight	20 lbs (9.09 kg)
Minimum Opening Requirement	6.6185 inches (168.11 mm)
Installation	Portable and Fixed
Turning Radius in Operation	5.2165 inches (132.5mm)
Materials of Construction	316LSS; PEEK; PTFE; Others
Standard Inlet Connections	1.50 inch NPT(M) and 1.50 inch BSP(M) 1.50" Camlock Part A; Others on request
Lubricant	Cleaning media

Standard Product Program

Model #	Nozzles	Inlet Connection	
SC15212051000-00	2x5mm	1.50" NPT(M)	
SC15212061000-00	2x6mm		
SC15212071000-00	2x7mm		
SC15212081000-00	2x8mm		
SC15212091000-00	2x9mm		
SC15212101000-00	2x10mm		
SC15212111000-00	2x11mm		
SC15212121000-00	2x12mm		
SC15222051000-00	2 x 5mm		1.50" BSP(M)
SC15222061000-00	2 x 6mm		
SC15222071000-00	2 x 7mm		
SC15222081000-00	2 x 8mm		
SC15222091000-00	2 x 9mm		
SC15222101000-00	2 x 10mm		
SC15222111000-00	2x11mm		
SC15222121000-00	2x12mm		
SC15232051000-00	2x5mm	1.50" Camlock Part A	
SC15232061000-00	2x6mm		
SC15232071000-00	2x7mm		
SC15232081000-00	2x8mm		
SC15232091000-00	2x9mm		
SC15232101000-00	2x10mm		
SC15232111000-00	2x11mm		
SC15232121000-00	2x12mm		

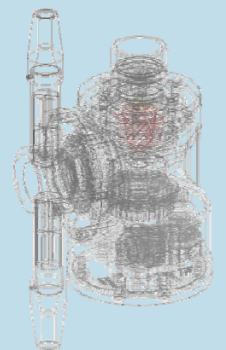
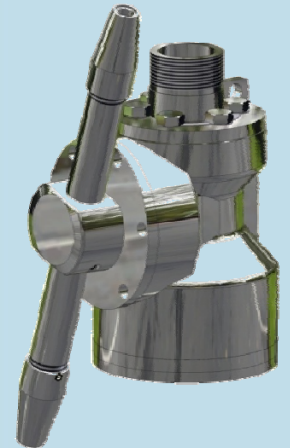


Key Features

SC15TW2

- Rugged construction
- Adjustable turbine
- ISO 9001 quality
- Exceptional jet lengths
- Easy maintenance
- 316L SS construction
- Optimized cycle times
- Flow through gearbox

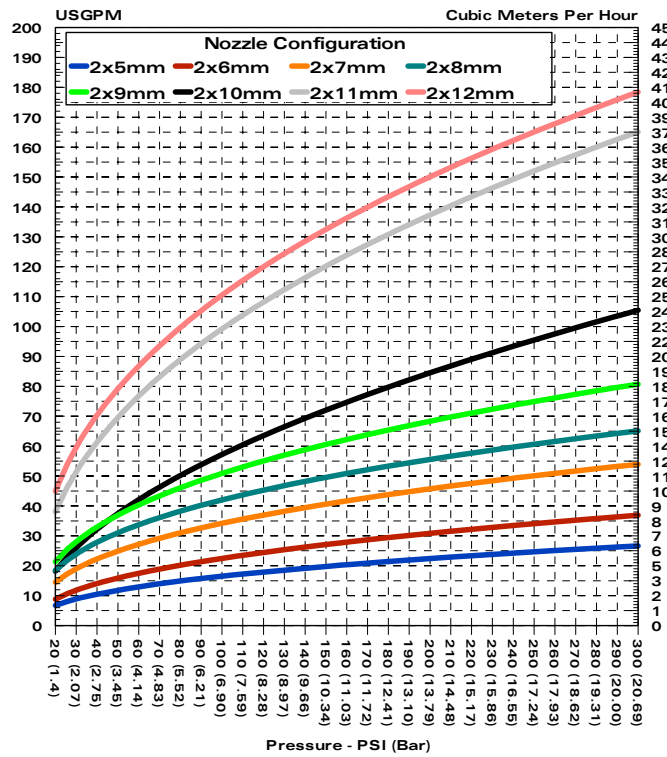
SC15TW2



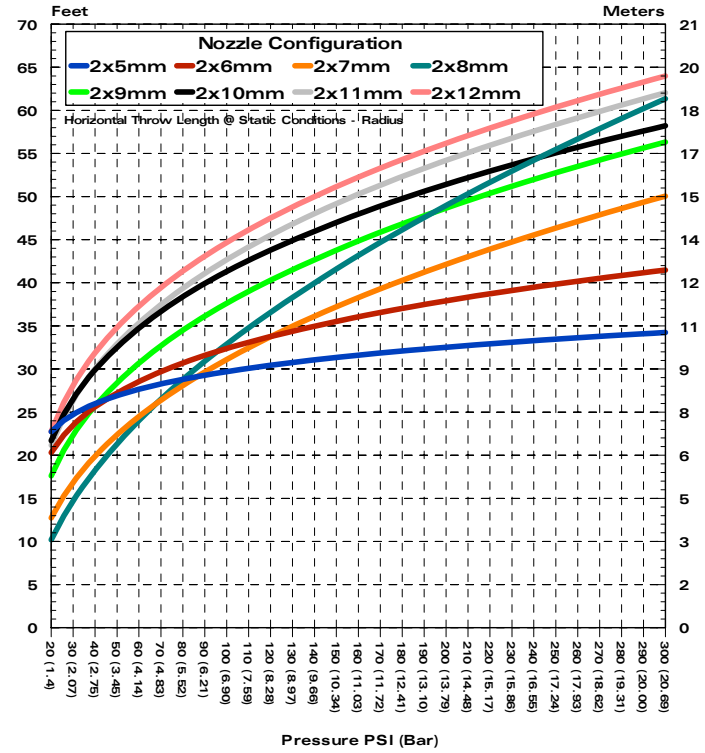
SC15TW2

tank cleaning machine integrated turbine

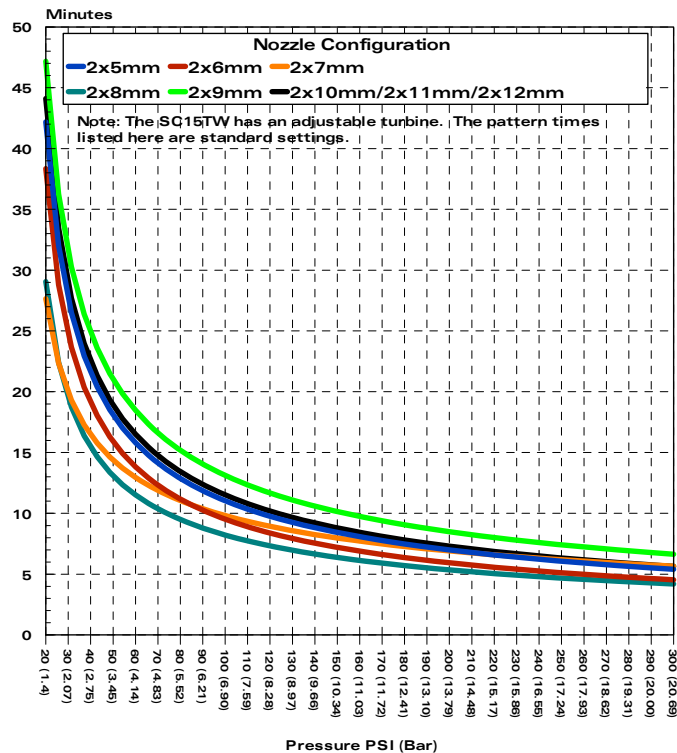
Pressure and Flow Rate



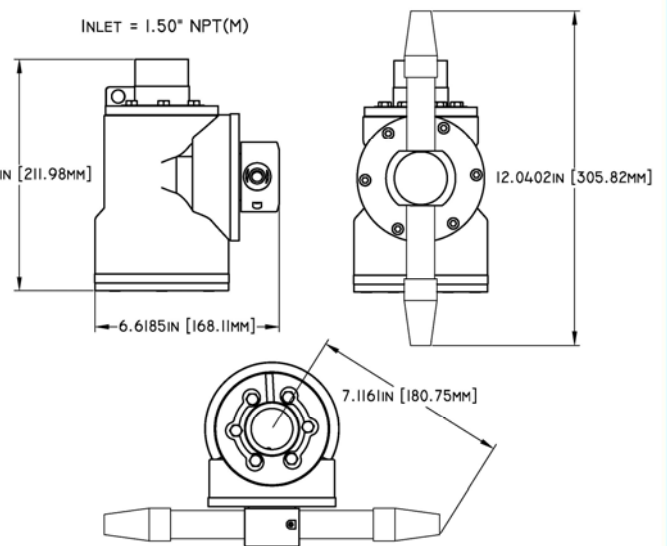
Horizontal Throw Length at Static Conditions



Cleaning Time, Complete Pattern



Dimensional Drawing



250.2009.02.03



Scanjet Systems, Inc.
 15200 Middlebrook Drive; Suite E
 Houston, Texas 77058 - USA
 Phone: 281.480.4041
 Fax: 713.513.5883
 Website: www.scanjetinc.com
 Email: sales@scanjetinc.com

